

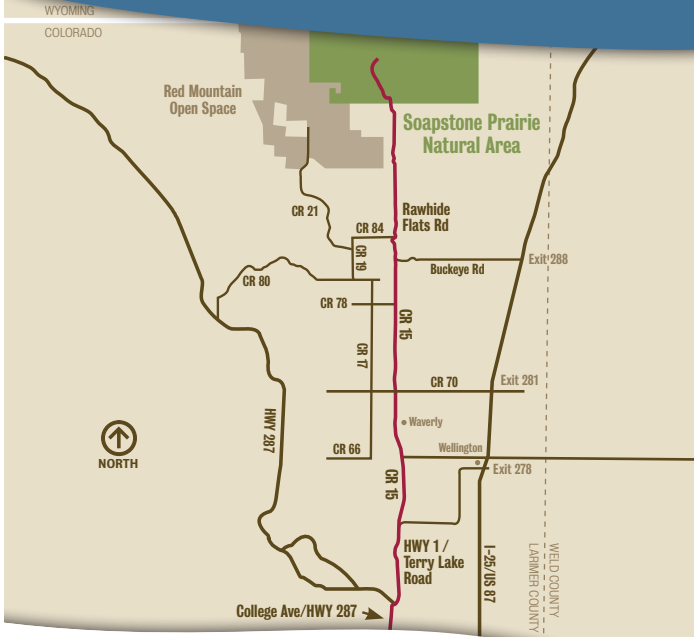
THANK YOU!

Thank you, Fort Collins and Larimer County voters. Your citizen-initiated sales tax dollars helped to conserve these lands and provide visitor amenities. There is no fee at Soapstone Prairie Natural Area.

CITY OF FORT COLLINS
SOAPSTONE PRAIRIE
NATURAL AREA

“Come to Soapstone Prairie - it'll blow you away...”

- Erica Saunders



ATTENTION EQUESTRIANS!

Remember: Equestrians must use the South Parking Lot.

Be considerate of others and clean up after your horse in the parking lot.



Help us prevent weeds! Your use of certified weed-free hay helps limit the spread of invasive weeds. Feed your horses weed-free forage well before you ride here, to help ensure this prairie remains in its natural condition. Ask your local feed store for more information. Thank you!

BE PREPARED.

This is rattlesnake country! Look where you put your hands and feet and stay on the established trails.

Soapstone Prairie is a big place – watch for distant storms bringing lightning. Avoid ridge tops during storms, which occur mostly in the afternoons.

This is wide-open country. Bring plenty of water and be prepared for wind and cool temperatures, or heat and sun.

KNOW THE RULES.

Please honor and respect all the special aspects of Soapstone Prairie. We all hold it in trust for future generations.

Look But Don't Touch! Enjoy what you see but leave everything in place. All collecting is illegal.



Stay on Marked Trails. Off-trail activity degrades the prairie, disturbs cultural resources and diminishes the experience for others. Only cars are permitted on Rawhide Flats Road.

Attention Drivers! Stay on designated roads and park in designated spaces. Violators will be ticketed.



Leave Fido At Home. To help protect wildlife, no dogs are allowed – even in cars.

THE TREKKING ORDER:

Please mind your trail manners-- Bikers yield to horses and hikers. Hikers yield to horses.



DIRECTIONS:

From Fort Collins, travel north on State HWY 1/Terry Lake Road. Turn left (toward Waverly) on County Road 15. Travel north and turn right onto Rawhide Flats Road and take it 6 miles to the entrance station.



fcgov.com/naturalareas
naturalareas@fcgov.com

Natural Areas Program Office 970-416-2815
Rangers 970-416-2147
Life-threatening emergency 911
For a guided nature walk 970-416-2480

Meet the past,
enjoy the present,
preserve the future.

Open dawn to dusk,
March 1– November 30

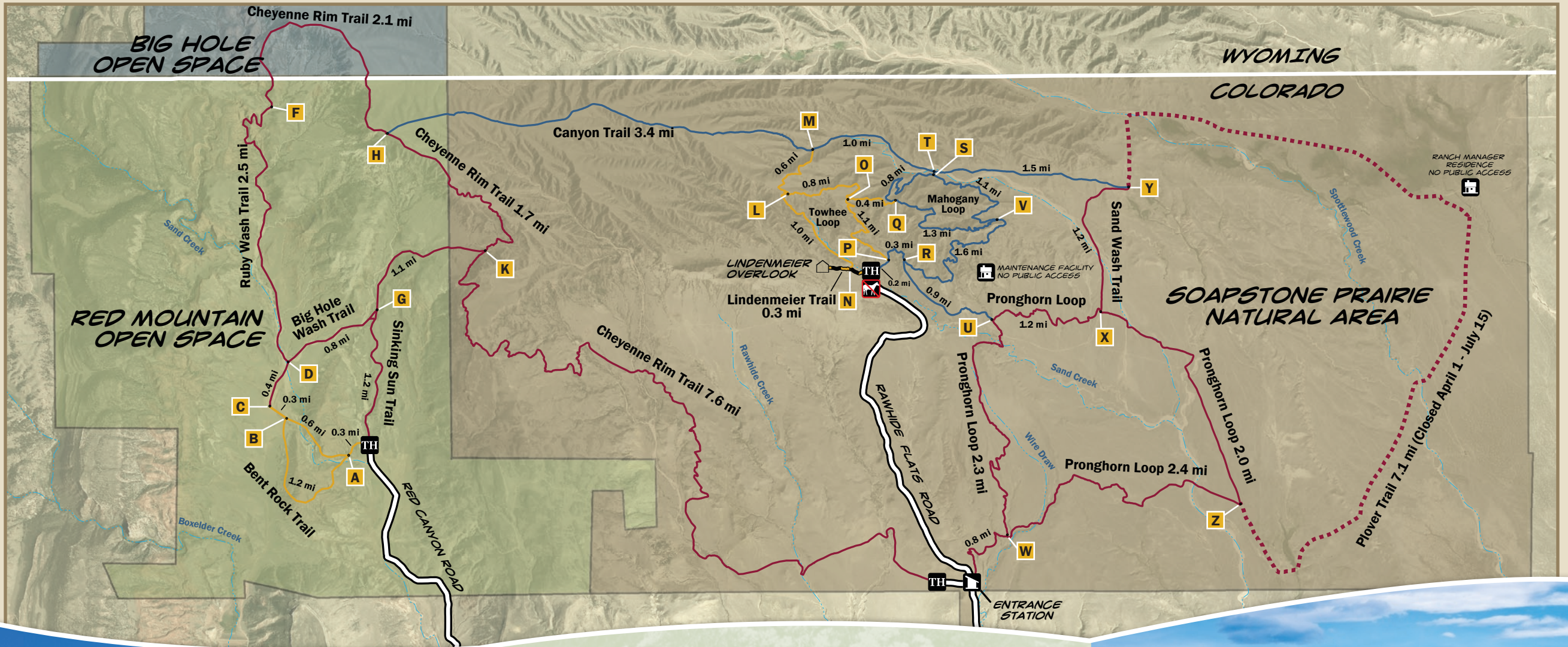
naturally yours

JUNE 2009



naturally yours





BRING THIS MAP WITH YOU!

Fifty miles of trails provides opportunities for everyone to experience Soapstone Prairie Natural Area and adjacent Red Mountain Open Space.

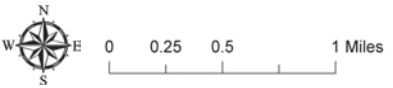
Trails are marked only at main intersections. Use the letters (A to Z) on the back of each trail marker and on the map to find your way. Watch for seasonal trail closures.



- City of Fort Collins Natural Area
- Larimer County Open Space
- City of Cheyenne Open Space

TH Trailhead includes parking areas, restrooms, picnic shelters & information kiosk

Public access road



- Hiking
- Paved accessible-grade hiking
- Hiking & biking
- Hiking, biking & horseback riding
- Seasonal hiking, biking & horseback riding

